

/ SAFE LOCKING DEVICES, SWITCHES AND PROXIMITY SENSORS

FROM EXTREMELY ECONOMICAL TO EXTREMELY TOUGH

Safety switches and magnetically coded safety systems are used for monitoring movable safety guards, such as safety doors, sliding grilles or flaps. Opening the protective devices triggers an E-STOP command. Safety locking devices keep the protective doors locked, thereby preventing the inadmissible access of people until the guarded machine no longer poses a danger.



Safety switches

Page 302

Safety locking devices

Page 312

Safety command devices

Page 320

Magnetically coded sensors

Page 323

Safety transponders

Page 325



Switching
sensors

Measuring
sensors

Products for
safety at work

Identification

Data transmission /
Control components

Industrial image
processing

Accessories

//SAFETY SWITCHES

OPEN IS OFF

For doors, flaps and covers that must be closed during the operation of machines, safety switches for position monitoring and for the protection of personnel and systems are required. In addition to standard designs for universal use, safety hinge switches and safety position switches are available as alternatives to hinge switches on flaps.

Safety switches with separate actuator

Standard designs with separate actuators allow different approach directions and thereby facilitate universal use.

/// S20



The S20 is a safety switch without locking device that can be used, e.g., on machines and systems where the operator is protected from the point of operation by grid doors or sliding gates.



Benefits:

- Housing made of glass fiber reinforced plastic – degree of protection IP 67
- Suited for normal duty applications
- Easy mounting with standard construction
- Universal use with 5 actuator approach directions
- Self-centering through funnel-shaped insertion opening

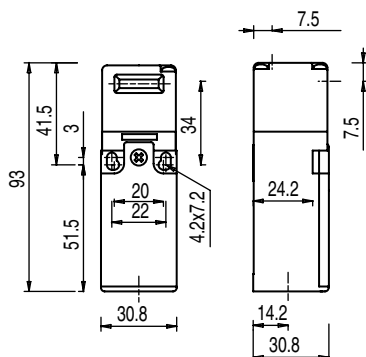


Direct access to the online product selector at www.leuze.com/en/s20

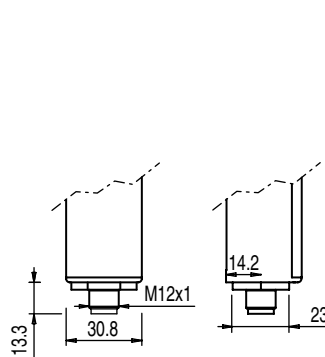
Part no.	Part description	Contact allocation	Housing material	Connection	Cable entry	Approach actuation directions	Actuation force (pull-out)
63000101	S20-P1C1-M20-FH	1NC + 1NO, slow-action contact	Plastic	Terminal, 4-pin	1x, M20 × 1.5	4 x lateral (90 °), 1 × top	10 N
63000102	S20-P1C3-M20-LH	1NC + 1NO, slow-action contact	Plastic	Terminal, 4-pin	3x, M20 × 1.5	4 x lateral (90 °), 1 × top	10 N
63000103	S20-P4C1-M20-FH	2NC + 1NO, slow-action contact	Plastic	Terminal, 6-pin	1x, M20 × 1.5	4 x lateral (90 °), 1 × top	10 N
63000105	S20-P4C1-M20-FH30	2NC + 1NO, slow-action contact	Plastic	Terminal, 6-pin	1x, M20 × 1.5	1 × top, 4 × lateral (90 °)	30 N
63000104	S20-P4C3-M20-LH	2NC + 1NO, slow-action contact	Plastic	Terminal, 6-pin	3x, M20 × 1.5	4 x lateral (90 °), 1 × top	10 N
63000106	S20-P4C1-M12-FH	2NC + 1NO, slow-action contact	Plastic	Connector, M12, 8-pin, plastic		1 × top, 4 × lateral (90 °)	10 N
63000100	S20-P3C1-M20-FH	2NC, slow-action contact	Plastic	Terminal, 4-pin	1x, M20 × 1.5	4 x lateral (90 °), 1 × top	10 N

Note: Actuators must be ordered separately!

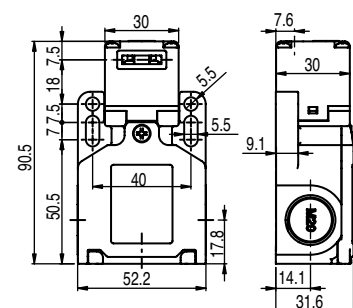
Dimensioned drawings: S20



S20-P3C1-M20-FH / S20-P1C1-M20-FH /
S20-P4C1-M20-FH30 safety switches



S20-P4C1-M12-FH safety switch
(dimensions of M12 connector)



S20-P1C3-M20-LH / S20-P4C3-M20-LH
safety switches

ACCESSORIES: S20

Connection technology

Connection cables

Part no.	Part description	Connection 1	No. of pins	Cable length	Sheathing material
678060	CB-M12-5000E-8GF	Connector, M12, axial, female	8-pin	5,000 mm	PUR
678061	CB-M12-10000E-8GF	Connector, M12, axial, female	8-pin	10,000 mm	PUR
678062	CB-M12-15000E-8GF	Connector, M12, axial, female	8-pin	15,000 mm	PUR
678063	CB-M12-25000E-8GF	Connector, M12, axial, female	8-pin	25,000 mm	PUR

Further connection cables can be found on our website

User-configurable connectors

Part no.	Part description	Connection	No. of pins
63000844	AC-PLP-8	Connector, M12, axial, male	8-pin

Adapter

Part no.	Part description	Design
63000843	AC-A-M20-12NPT	M20 × 1,5 on 1/2 NPT

Actuator

Part no.	Part description	Design	Mounting bore holes	Material	Type of fastening	Description
63000706	AC-AN-F1J2	Straight	In key direction	Plastic, stainless steel	Through-hole mounting	Functions: flexible, 1 direction, adjustable, 2 directions
63000703	AC-AN-F2J2	Straight	90° to key direction	Plastic, stainless steel	Through-hole mounting	Functions: flexible, 2 directions, adjustable, 2 directions
63000702	AC-AN-F4	Straight	90° to key direction	Plastic, stainless steel	Through-hole mounting	Functions: flexible, 4 directions
63000700	AC-AN-S	Straight	90° to key direction	Stainless steel	Through-hole mounting	
63000704	AC-AN-SL	Straight	90° to key direction	Stainless steel	Through-hole mounting	
63000701	AC-AN-A	Angled	In key direction	Stainless steel	Through-hole mounting	
63000705	AC-AN-AL	Angled	In key direction	Stainless steel	Through-hole mounting	
63000707	AC-AN-ASH	Angled	In key direction	Stainless steel	Through-hole mounting	

/// S200



This safety switch is used, e. g., for heavy doors or rolling gates in rough environments, i.e., it is preferred for heavy duty applications.



Benefits:

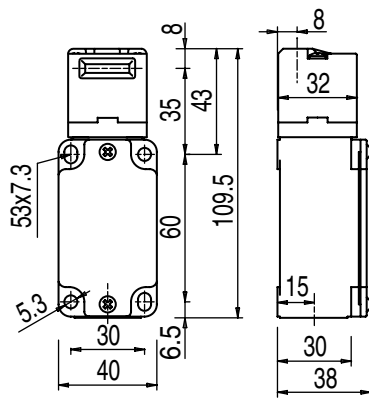
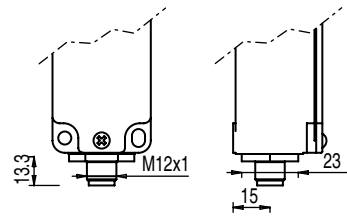
- Housing made of metal – degree of protection IP 67
- Suited for heavy duty applications
- Easy mounting with standard construction
- Universal use with 5 actuator approach directions
- Self-centering through funnel-shaped insertion opening



Direct access to the online product selector at www.leuze.com/en/s200

Part no.	Part description	Contact allocation	Housing material	Connection	Cable entry	Approach actuation directions	Actuation force (pull-out)
63000201	S200-M1C1-M20	1NC + 1NO, slow-action contact	Metal	Terminal, 4-pin	1x, M20 × 1.5	4 x lateral (90 °), 1 × top	10 N
63000202	S200-M4C1-M20	2NC + 1NO, slow-action contact	Metal	Terminal, 6-pin	1x, M20 × 1.5	4 x lateral (90 °), 1 × top	10 N
63000203	S200-M4C1-M12	2NC + 1NO, slow-action contact	Metal	Connector, M12, 8-pin, metal		4 x lateral (90 °), 1 × top	10 N
63000200	S200-M3C1-M20	2NC, slow-action contact	Metal	Terminal, 4-pin	1x, M20 × 1.5	4 x lateral (90 °), 1 × top	10 N

Note: Actuators must be ordered separately!

Dimensioned drawings: S200S200-M1C1-M20 / S200-M3C1-M20 / S200-M4C1-M20
safety switches

S200-M4C1-M12 safety switch (dimensions of M12 connector)

ACCESSORIES: S200**Connection technology**

Connection cables

Part no.	Part description	Connection 1	No. of pins	Cable length	Sheathing material
678060	CB-M12-5000E-8GF	Connector, M12, axial, female	8-pin	5,000 mm	PUR
678061	CB-M12-10000E-8GF	Connector, M12, axial, female	8-pin	10,000 mm	PUR
678062	CB-M12-15000E-8GF	Connector, M12, axial, female	8-pin	15,000 mm	PUR
678063	CB-M12-25000E-8GF	Connector, M12, axial, female	8-pin	25,000 mm	PUR

Further connection cables can be found on our website

User-configurable connectors

Part no.	Part description	Connection	No. of pins
63000845	AC-PLM-8	Connector, M12, axial, male	8-pin

Adapter

Part no.	Part description	Design
63000843	AC-A-M20-12NPT	M20 × 1,5 on 1/2 NPT

Actuator

Part no.	Part description	Design	Mounting bore holes	Material	Type of fastening	Description
63000846	AC-KL-AH			Metal		Actuator interlock
63000724	AC-AH-F1J2	Straight	In key direction	Plastic, stainless steel	Through-hole mounting	Functions: flexible, 1 direction, adjustable, 2 directions
63000723	AC-AH-F2J2	Straight	90° to key direction	Plastic, stainless steel	Through-hole mounting	Functions: flexible, 2 directions, adjustable, 2 directions
63000722	AC-AH-F4	Straight	90° to key direction	Plastic, stainless steel	Through-hole mounting	Functions: flexible, 4 directions
63000725	AC-AH-F4J2-TK	Straight	In key direction, 90° to key direction	Stainless steel	Through-hole mounting	Functions: flexible, 4 directions, rotatable head, key, adjustable, 4 directions
63000720	AC-AH-S	Straight	90° to key direction	Stainless steel	Through-hole mounting	
63000721	AC-AH-A	Angled	In key direction	Stainless steel	Through-hole mounting	

Safety position switches

Because of their construction design, these switches are used for the position monitoring of machines or as an alternative to hinge switches – always with the prerequisite that appropriate actuation tappets or notches can actuate the switch when friction closed.

/// S300



The S300 safety position switches have a metal housing in accordance with degree of protection IP 67. The models equipped with various contact sets enable integration in control circuits up to category 4 in accordance with EN ISO 13849. In addition, models are available with different actuators and supports and connection options.



Benefits:

- Metal housing for heavy duty applications
- Switching direction selectable
- Universal use with individually set actuator approach directions and angles
- Stable lever fastening in 10° raster
- Models with plunger and roller actuator, extremely long-life and robust

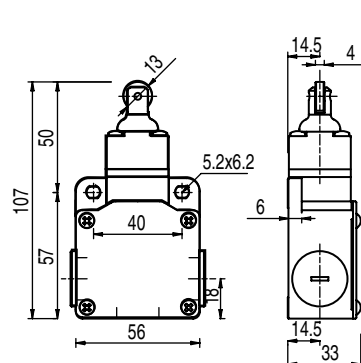


Direct access to the online product selector at www.leuze.com/en/s300

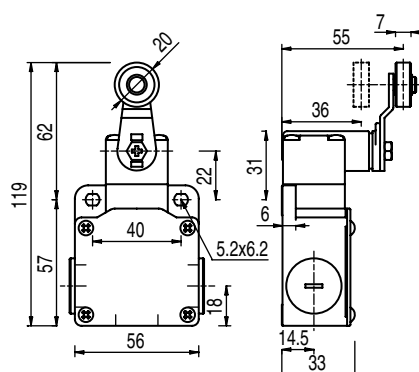
Part no.	Part description	Contact allocation	Housing material	Connection	Cable entry	Approach actuation directions	Switching direction
63000310	S300-P0C1-M20-CB	1NC + 1NO, snap-action contact	Plastic	Terminal, 4-pin	1x, M20 × 1.5	4 x lateral (90 °), 360 °	One side, both sides
63000300	S300-M0C3-M20-15	1NC + 1NO, snap-action contact	Metal	Terminal, 4-pin	3x, M20 × 1.5	4 x lateral (90 °), 1 × top	Both sides
63000302	S300-M0C3-M20-31	1NC + 1NO, snap-action contact	Metal	Terminal, 4-pin	3x, M20 × 1.5	4 x lateral (90 °), 360 °	Both sides, one side
63000306	S300-P13C1-M20-CB	2NC + 1NO, slow-action contact	Plastic	Terminal, 6-pin	1x, M20 × 1.5	4 x lateral (90 °), 360 °	One side, both sides
63000308	S300-P13C1-M20-SB	2NC + 1NO, slow-action contact	Plastic	Terminal, 6-pin	1x, M20 × 1.5	4 x lateral (90 °), 360 °	One side, both sides
63000301	S300-M13C3-M20-15	2NC + 1NO, slow-action contact	Metal	Terminal, 6-pin	3x, M20 × 1.5	4 x lateral (90 °), 1 × top	Both sides
63000303	S300-M13C3-M20-31	2NC + 1NO, slow-action contact	Metal	Terminal, 6-pin	3x, M20 × 1.5	4 x lateral (90 °), 360 °	Both sides, one side
63000304	S300-M13C3-M20-CB	2NC + 1NO, slow-action contact	Metal	Terminal, 6-pin	3x, M20 × 1.5	4 x lateral (90 °), 360 °	One side, both sides
63000305	S300-M13C3-M20-SB	2NC + 1NO, slow-action contact	Metal	Terminal, 6-pin	3x, M20 × 1.5	4 x lateral (90 °), 360 °	One side, both sides
63000307	S300-P13C1-M12-CB	2NC + 1NO, slow-action contact	Plastic	Connector, M12, 8-pin, plastic		4 x lateral (90 °), 360 °	One side, both sides
63000309	S300-P13C1-M12-SB	2NC + 1NO, slow-action contact	Plastic	Connector, M12, 8-pin, plastic		4 x lateral (90 °), 360 °	One side, both sides

Note: Actuators must be ordered separately!

Dimensioned drawings: S300



S300-M0C3-M20-15 /
S300-M13C3-M20-15
safety position switches



S300-M0C3-M20-31 and S300-M13C3-M20-31
safety position switches

Switching
sensors

Measuring
sensors

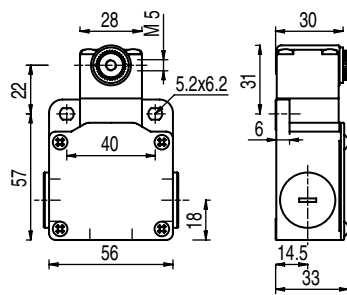
Products for
safety at work

Identification

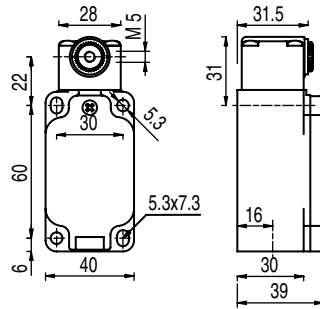
Data transmission /
Control components

Industrial image
processing

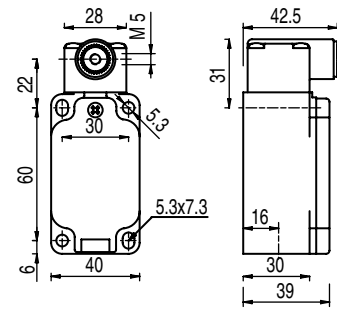
Accessories

Dimensioned drawings: S300

S300-M13C3-M20-CB
safety position switch



S300-P13C1-M20-CB /
S300-P13C1-M12-CB
safety position switches



S300-P13C1-M20-SB /
S300-P13C1-M12-SB
safety position switches

ACCESSORIES: S300**Connection technology**

Connection cables

Part no.	Part description	Connection 1	No. of pins	Cable length	Sheathing material
678060	CB-M12-5000E-8GF	Connector, M12, axial, female	8-pin	5,000 mm	PUR
678061	CB-M12-10000E-8GF	Connector, M12, axial, female	8-pin	10,000 mm	PUR
678062	CB-M12-15000E-8GF	Connector, M12, axial, female	8-pin	15,000 mm	PUR
678063	CB-M12-25000E-8GF	Connector, M12, axial, female	8-pin	25,000 mm	PUR

Further connection cables can be found on our website

User-configurable connectors

Part no.	Part description	Connection	No. of pins
63000845	AC-PLM-8	Connector, M12, axial, male	8-pin

Adapter

Part no.	Part description	Design
63000843	AC-A-M20-12NPT	M20 × 1,5 on 1/2 NPT

Actuator

Part no.	Part description	Design	Mounting bore holes	Material	Type of fastening	Description
63000882	AC-LL-R	Straight	90° to key direction	Steel, galvanized, plastic	Through-hole mounting	Length: 34 mm ... 93 mm; Functions: easy installation, quick vertical and axial alignment in just a few steps, linkage via roller
63000884	AC-LL-R40	Straight	90° to key direction	Steel, galvanized, rubber	Through-hole mounting	Length: 50 mm ... 103 mm; Functions: easy installation, quick vertical and axial alignment in just a few steps, linkage via roller
63000883	AC-PL	Straight	90° to key direction	Steel, porcelain	Through-hole mounting	Functions: easy installation, quick vertical and axial alignment in just a few steps, linkage via sleeve
63000880	AC-SL-R	Straight	90° to key direction	Steel, galvanized, plastic	Through-hole mounting	Functions: easy installation, quick vertical and axial alignment in just a few steps, linkage via roller
63000881	AC-AL-R	Angled	90° to key direction	Steel, galvanized, plastic	Through-hole mounting	Functions: easy installation, quick vertical and axial alignment in just a few steps, linkage via roller

Safety hinge switches

Safety hinge switches are used for the position monitoring of hard guards that can rotate (e. g. protective hoods) by means of a monitoring switch (without guard interlocking) integrated into the hinge.

/// S400



The S400 safety hinge switches unite the safety switch and door hinge functions in one component. Because external actuators are not required with this switch, it can also be used problem-free in environments with high dust concentration levels or with heavy particle loads (degrees of protection IP 67). By means of a repeatable setting (switching angle alignment), fault-free function is ensured even with warped or misaligned doors.



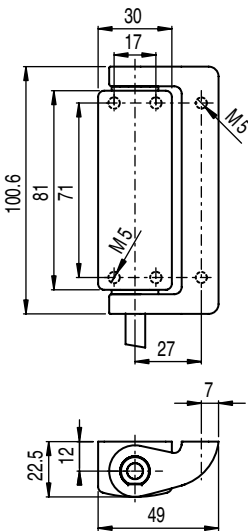
- Benefits:**
- 180 ° maximum opening angle of the protective device
 - Repeatable setting (switching angle alignment) with skewed or misaligned doors
 - Compact, rounded-off construction design in robust metal version, degree of protection IP 67
 - Encapsulated, internal actuator guarantees proper functioning, even under difficult conditions
 - Highly tamper proof due to covered screws
 - Cable or M12 connection



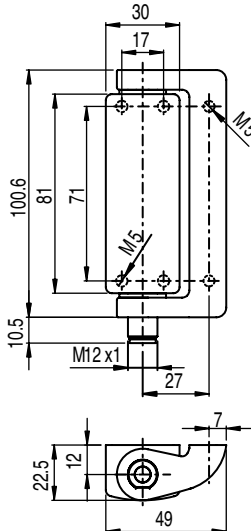
Direct access to the online product selector at www.leuze.com/en/s400

Part no.	Part description	Contact allocation	Housing material	Connection	Side of cable entry
63000411	S400-M4-CB2PUR-W	2NC + 1NO, slow-action contact	Metal	Cable, 7-wire, 2,000 mm, PUR	Wall side
63000402	S400-M4CB2-T	2NC + 1NO, slow-action contact	Metal	Cable, 7-wire, 2,000 mm, PVC	From above (with left installation)
63000400	S400-M4CB2-B	2NC + 1NO, slow-action contact	Metal	Cable, 7-wire, 2,000 mm, PVC	From below (with left installation)
63000406	S400-M4-CB02M12-W	2NC + 1NO, slow-action contact	Metal	Cable with connector, M12, 8-pin, metal, 200 mm, PVC	Wall side
63000403	S400-M4M12-T	2NC + 1NO, slow-action contact	Metal	Connector, M12, 8-pin, metal	From above (with left installation)
63000401	S400-M4M12-B	2NC + 1NO, slow-action contact	Metal	Connector, M12, 8-pin, metal	From below (with left installation)
63000407	S400-M1-CB02M12-W	2NC + 1NO, snap-action contact	Metal	Cable with connector, M12, 8-pin, metal, 200 mm, PVC	Wall side

Dimensioned drawings: S400



S400-M4CB2-B safety hinge switches



S400-M4M12-B safety hinge switches

Switching
sensors

Measuring
sensors

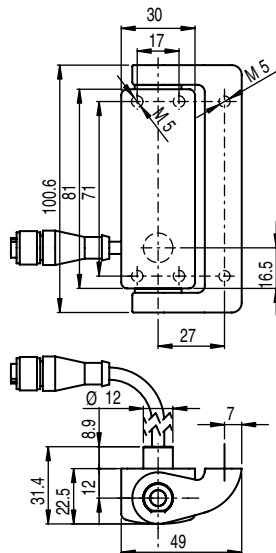
Products for
safety at work

Identification

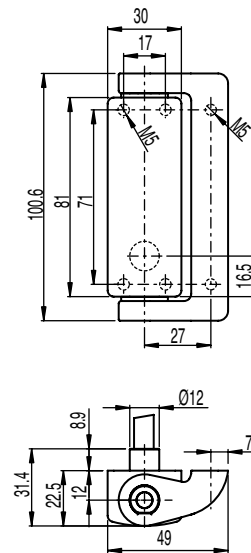
Data transmission /
Control components

Industrial image
processing

Accessories

Dimensioned drawings: S400

S400-Mx-CB02M12-W safety hinge switches



S400-M4-CB2PUR-W safety hinge switches

ACCESSORIES: S400**Connection technology**

Connection cables

Part no.	Part description	Connection 1	No. of pins	Cable length	Sheathing material
678060	CB-M12-5000E-8GF	Connector, M12, axial, female	8-pin	5,000 mm	PUR
678061	CB-M12-10000E-8GF	Connector, M12, axial, female	8-pin	10,000 mm	PUR
678062	CB-M12-15000E-8GF	Connector, M12, axial, female	8-pin	15,000 mm	PUR
678063	CB-M12-25000E-8GF	Connector, M12, axial, female	8-pin	25,000 mm	PUR

Further connection cables can be found on our website

Mounting

Part no.	Part description	Description	Material	Design	Type of fastening	Dimensions
63000770	AC-H-S400	Additional hinge	Metal, ZAMAK		Mounting thread	49 mm × 22.5 mm × 100.6 mm
63000775	AC-H-S400-S	Additional hinge	Metal, ZAMAK		Mounting thread	44.5 mm × 22.5 mm × 65 mm
63000772	AC-MP1-S400	Mounting plate set	Metal	Mounting plate with L-angle		
63000771	AC-MP3-S400	Mounting plate set	Metal	Mounting plate		
63000774	AC-SEPL-S4xx	Safety plug				

/// S410



With its wider mounting fork, this safety hinge switch is suitable above all for use with glass or plastic parts, as larger support surfaces are needed for stability in these cases.



Benefits:

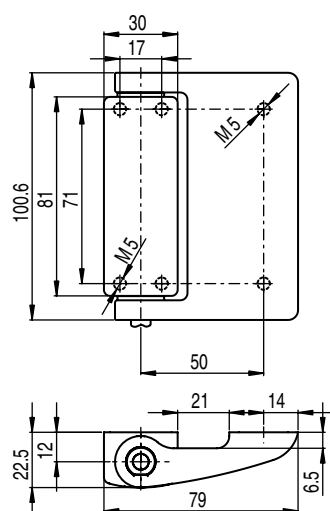
- Wide fork dimensions for stability on glass and plastic
- 180 ° maximum opening angle of the protective device
- Repeatable setting (switching angle alignment) with skewed or misaligned doors
- Degree of protection IP 67
- Compact, rounded-off construction design in robust metal version
- Encapsulated, internal actuator guarantees proper functioning, even under difficult conditions
- Highly tamper proof due to covered screws
- Cable or M12 connection



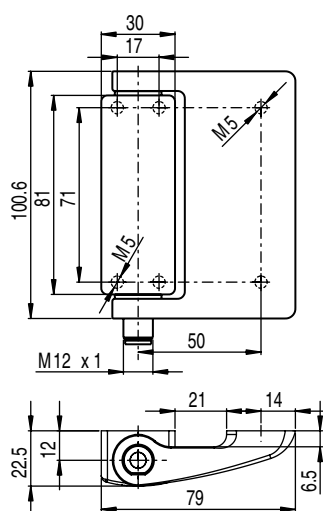
Direct access to the online product selector at www.leuze.com/en/s410

Part no.	Part description	Contact allocation	Housing material	Connection	Side of cable entry
63000412	S410-M4-CB2PUR-W	2NC + 1NO, slow-action contact	Metal	Cable, 7-wire, 2,000 mm, PVC	Wall side
63000410	S410-M4-CB02M12-W	2NC + 1NO, slow-action contact	Metal	Cable with connector, M12, 8-pin, metal, 200 mm, PVC	Wall side
63000408	S410-M1CB2-T	2NC + 1NO, snap-action contact	Metal	Cable, 7-wire, 2,000 mm, PVC	From above (with left installation)
63000404	S410-M1CB2-B	2NC + 1NO, snap-action contact	Metal	Cable, 7-wire, 2,000 mm, PVC	From below (with left installation)
63000409	S410-M1M12-T	2NC + 1NO, snap-action contact	Metal	Connector, M12, 8-pin, metal	From above (with left installation)
63000405	S410-M1M12-B	2NC + 1NO, snap-action contact	Metal	Connector, M12, 8-pin, metal	From below (with left installation)

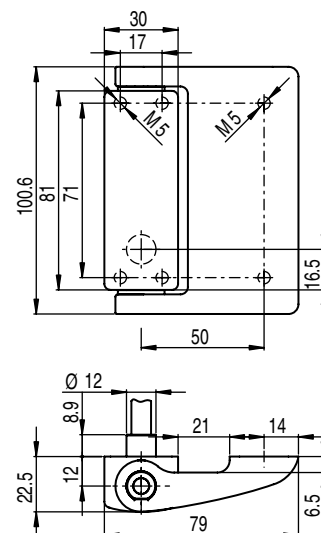
Dimensioned drawings: S410



S410-M1CB2-B
safety hinge switches



S410-M1M12-B
safety hinge switches



S410-M4-CB02M12-W /
S410-M4-CB2PUR-W
safety hinge switches

ACCESSORIES: S410

Connection technology

Connection cables

Part no.	Part description	Connection 1	No. of pins	Cable length	Sheathing material
678060	CB-M12-5000E-8GF	Connector, M12, axial, female	8-pin	5,000 mm	PUR
678061	CB-M12-10000E-8GF	Connector, M12, axial, female	8-pin	10,000 mm	PUR
678062	CB-M12-15000E-8GF	Connector, M12, axial, female	8-pin	15,000 mm	PUR
678063	CB-M12-25000E-8GF	Connector, M12, axial, female	8-pin	25,000 mm	PUR

Further connection cables can be found on our website

Mounting

Part no.	Part description	Description	Material	Type of fastening	Dimensions
63000773	AC-H-S410	Additional hinge	Metal, ZAMAK	Mounting thread	79 mm × 22.5 mm × 100.6 mm
63000774	AC-SEPL-S4xx	Safety plug			

/// S420



Owing to their highly tempered stainless steel housing and the degree of protection IP 69K, the series S420 safety hinge switches are particularly suited to tasks which have extremely high requirements with regard to hygiene. From a technical viewpoint, the unique switch impresses with its sensor-based OSSD, four multicolor LEDs for on-site diagnosis and its high safety level (SIL 3, PL e).



Benefits:

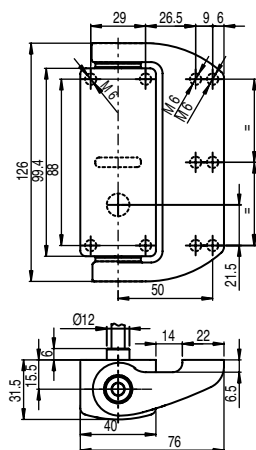
- Hinge switch in a conventional variant with contact allocation (S420-9x) or in a variant with on-site diagnosis and OSSDs (S420-OSx)
- Series connection of devices with SIL3 and PLe (S420-OSx) allows low-cost interconnection with an extremely high safety level
- Long mission time even with heavy doors or difficult materials (e. g. acrylic glass) owing to the robust housing and 6 screwed connections along its arm
- High-grade standard-compliant surfaces (< 0.8 µm) which can be cleaned easily even under hygienically difficult conditions
- Degrees of protection IP 67 and IP 69K ensure reliable operation even in the case of intensive cleaning and dust accumulation
- Optical information about the hinge status is provided on site by four multicolor LEDs
- Concealed screwed connections to protect against tampering and to enable easier cleaning
- Long-term identifiability owing to the robust laser print
- Reduced installation requirements and fast connection due to integrated cable or M12 connector with 0,2 m cable
- Additional signal output used to actuate signal lamps or for signaling status to control units
- High level of investment protection owing to simple and extensive adjustability to almost 0° e. g. in the case of door wear



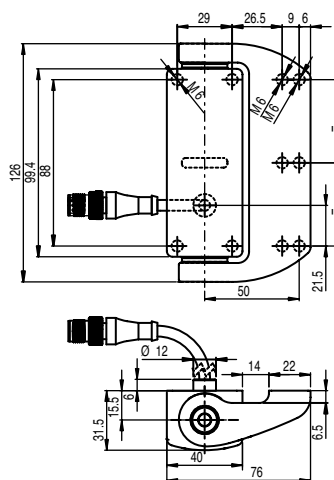
Direct access to the online product selector at www.leuze.com/en/s420

Part no.	Part description	Contact allocation	Housing material	Connection	Side of cable entry
63000420	S420-9CB2-LW	2NC + 2NO, slow-action contact	Stainless steel	Cable, 8-wire, 2,000 mm, PVC	Wall side
63000422	S420-9-CB02M12-LW	2NC + 2NO, slow-action contact	Stainless steel	Cable with connector, M12, 8-pin, metal, 200 mm, PVC	Wall side
63000421	S420-OS-CB2-LW	OSSD, slow-action contact	Stainless steel	Cable, 8-wire, 2,000 mm, PVC	Wall side
63000423	S420-OS-CB02M12-LW	OSSD, slow-action contact	Stainless steel	Cable with connector, M12, 8-pin, metal, 200 mm, PVC	Wall side

Dimensioned drawings: S420



S420-9CB2-LW / S420-OS-CB2-LW
safety hinge switches



S420-9-CB02M12-LW / S420-OS-CB02M12-LW
safety hinge switches

Switching
sensors

Measuring
sensors

Products for
safety at work

Identification

Data transmission /
Control components

Industrial image
processing

Accessories

ACCESSORIES: S420

Connection technology

Connection cables

Part no.	Part description	Connection 1	No. of pins	Cable length	Sheathing material
678060	CB-M12-5000E-8GF	Connector, M12, axial, female	8-pin	5,000 mm	PUR
678061	CB-M12-10000E-8GF	Connector, M12, axial, female	8-pin	10,000 mm	PUR
678062	CB-M12-15000E-8GF	Connector, M12, axial, female	8-pin	15,000 mm	PUR
678063	CB-M12-25000E-8GF	Connector, M12, axial, female	8-pin	25,000 mm	PUR

Further connection cables can be found on our website

Mounting

Part no.	Part description	Description	Material	Type of fastening	Dimensions
63000778	AC-H-S420	Additional hinge	Stainless steel, AISI 316L	Mounting thread	76 mm × 31.5 mm × 126 mm
63000779	AC-S-S420	Seal set	Plastic		
63000774	AC-SEPL-S4xx	Safety plug			

SMARTER APPLICATION KNOW-HOW



Trade shows

Reliable systems for 2D- and 3D-measurement of distances and objects



Positioning

Sensor technology for quick positioning accurate down to the millimeter



Safeguarding

Economical solutions in all areas of safety at work



Identification

Innovative code readers and RFID systems

Additional application highlights can be found under: www.leuze.com/en/practice

//SAFETY LOCKING DEVICES

THE DOOR STAYS CLOSED!

Safety locking devices keep protective doors securely locked and thereby prevent the inadmissible access of people until the guarded machine no longer poses a danger. Not until there is no longer a danger to the machine or to the workers is access released by an electric signal. With their robust design, all Leuze electronic safety switches and locking devices are designed for rough industrial applications.

/// L10



The compact and economical L10 safety locking device reduces wiring through manual locking and releasing.



Benefits:

- Particularly economical locking solution for rarely-used maintenance doors and applications without electrical control signals
- Hardly any wiring and cabling costs due to manual locking and unlocking
- 6 different heavy duty actuators for the most diverse installation conditions

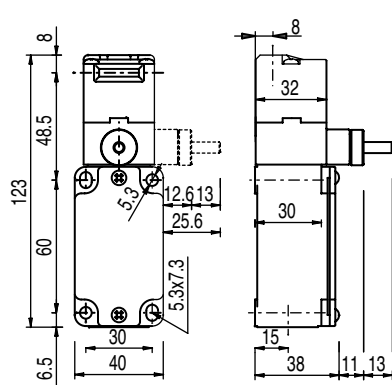


Direct access to the online product selector at www.leuze.com/en/l10

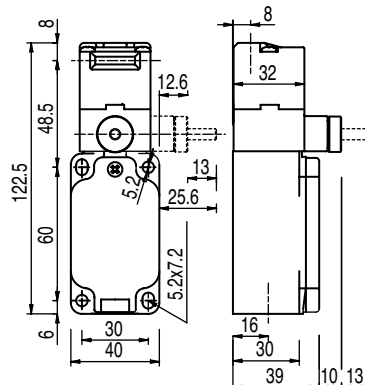
Part no.	Part description	Contact allocation	Housing material	Connection	Cable entry	Approach actuation directions	Locking actuation	Locking type
63000558	L10-P3C1-M20-K0	2NC + 1NO, slow-action contact	Plastic	Terminal, screw terminal, 6-pin	1x, M20 × 1.5	4 x lateral (90 °), 1 × top	Manual unlocking by means of key	Mechanical
63000554	L10-P3C1-M20-LB10	2NC + 1NO, slow-action contact	Plastic	Terminal, screw terminal, 6-pin	1x, M20 × 1.5	4 x lateral (90 °), 1 × top	Manual unlocking by means of knurled nut	Mechanical
63000555	L10-P3C1-M20-LB20	2NC + 1NO, slow-action contact	Plastic	Terminal, screw terminal, 6-pin	1x, M20 × 1.5	4 x lateral (90 °), 1 × top	Manual unlocking by means of knurled nut	Mechanical
63000552	L10-P3C1-M20-SB20	2NC + 1NO, slow-action contact	Plastic	Terminal, screw terminal, 6-pin	1x, M20 × 1.5	1 × top, 4 × lateral (90 °)	Manual unlocking by means of knurled nut	Mechanical
63000559	L10-M3C1-M20-K0	2NC + 1NO, slow-action contact	Metal	Terminal, screw terminal, 6-pin	1x, M20 × 1.5	4 x lateral (90 °), 1 × top	Manual unlocking by means of key	Mechanical
63000553	L10-M3C1-M20-SB20	2NC + 1NO, slow-action contact	Metal	Terminal, screw terminal, 6-pin	1x, M20 × 1.5	1 × top, 4 × lateral (90 °)	Manual unlocking by means of knurled nut	Mechanical
63000550	L10-P2C1-M20-SB20	2NC, slow-action contact	Plastic	Terminal, screw terminal, 4-pin	1x, M20 × 1.5	1 × top, 4 × lateral (90 °)	Manual unlocking by means of knurled nut	Mechanical
63000551	L10-M2C1-M20-SB20	2NC, slow-action contact	Metal	Terminal, screw terminal, 4-pin	1x, M20 × 1.5	1 × top, 4 × lateral (90 °)	Manual unlocking by means of knurled nut	Mechanical

Note: Actuators must be ordered separately!

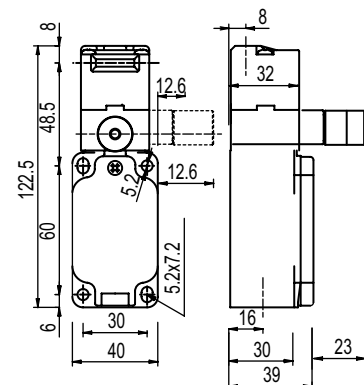
Dimensioned drawings: L10



L10-P2C1-M20-SB20 /
L10-P3C1-M20-SB20
safety locking device

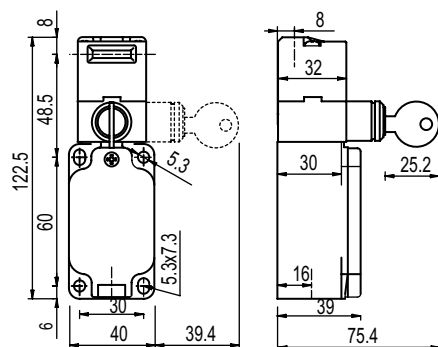


L10-M2C1-M20-SB20 /
L10-M3C1-M20-SB20
safety locking device

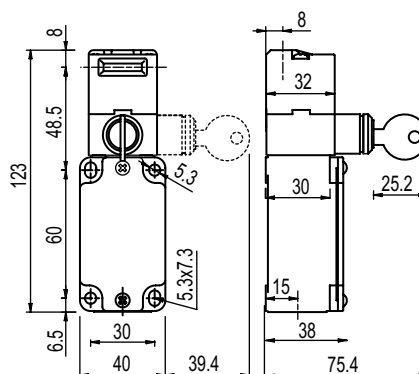


L10-P3C1-M20-LB10 /
L10-P3C1-M20-LB20
safety locking device

Dimensioned drawings: L10



L10-P3C1-M20-KO safety locking device



L10-M3C1-M20-KO safety locking device

Switching
sensorsMeasuring
sensorsProducts for
safety at work

Identification

Data transmission /
Control componentsIndustrial image
processing

Accessories

ACCESSORIES: L10

Connection technology

Connection cables

Part no.	Part description	Connection 1	No. of pins	Cable length	Sheathing material
678060	CB-M12-5000E-8GF	Connector, M12, axial, female	8-pin	5,000 mm	PUR
678061	CB-M12-10000E-8GF	Connector, M12, axial, female	8-pin	10,000 mm	PUR
678062	CB-M12-15000E-8GF	Connector, M12, axial, female	8-pin	15,000 mm	PUR
678063	CB-M12-25000E-8GF	Connector, M12, axial, female	8-pin	25,000 mm	PUR

Further connection cables can be found on our website

User-configurable connectors

Part no.	Part description	Connection	No. of pins
63000845	AC-PLM-8	Connector, M12, axial, male	8-pin
63000844	AC-PLP-8	Connector, M12, axial, male	8-pin

Adapter

Part no.	Part description	Design
63000843	AC-A-M20-12NPT	M20 × 1,5 on 1/2 NPT

Actuator

Part no.	Part description	Design	Mounting bore holes	Material	Type of fastening	Description
63000721	AC-AH-A	Angled	In key direction	Stainless steel	Through-hole mounting	
63000724	AC-AH-F1J2	Straight	In key direction	Plastic, stainless steel	Through-hole mounting	Functions: flexible, 1 direction, adjustable, 2 directions
63000723	AC-AH-F2J2	Straight	90° to key direction	Plastic, stainless steel	Through-hole mounting	Functions: flexible, 2 directions, adjustable, 2 directions
63000722	AC-AH-F4	Straight	90° to key direction	Plastic, stainless steel	Through-hole mounting	Functions: flexible, 4 directions
63000725	AC-AH-F4J2-TK	Straight	In key direction, 90° to key direction	Stainless steel	Through-hole mounting	Functions: flexible, 4 directions, rotatable head, key, adjustable, 4 directions
63000720	AC-AH-S	Straight	90° to key direction	Stainless steel	Through-hole mounting	
63000846	AC-KL-AH			Metal		Actuator interlock

/// L100



The versatile safety locking device is used both for personnel safety as well as for machine protection and is used to guard machines and systems that have stopping times.

**Benefits:**

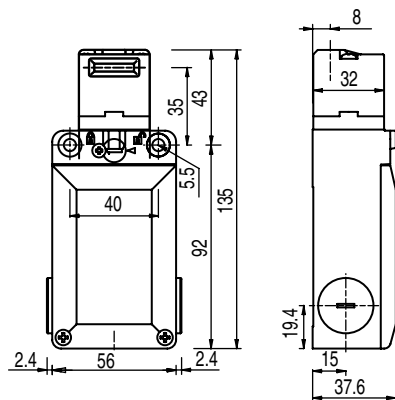
- 6 different heavy duty actuators for the most diverse installation conditions
- Standard construction in models with electromagnetic or spring force-actuated interlocking type and auxiliary release function
- Adjustable switch-on current reduction



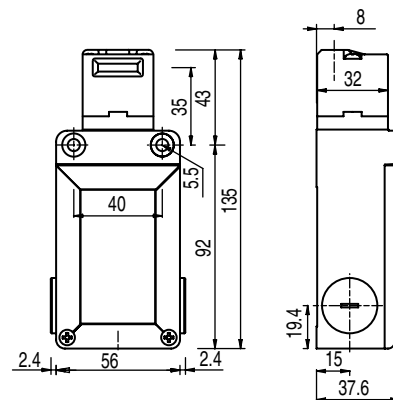
Direct access to the online product selector at www.leuze.com/en/l100

Part no.	Part description	Contact allocation	Housing material	Connection	Cable entry	Approach actuation directions	Locking actuation	Locking type
63000600	L100-P3C3-M20-SLM24	1NC, 1NC + 1NO, slow-action contact	Plastic	Terminal, screw terminal, 8-pin	3x, M20 x 1.5	1 x top, 4 x lateral (90 °)	Spring	Spring force
63000601	L100-P3C3-M20-MLM24	1NC, 1NC + 1NO, slow-action contact	Plastic	Terminal, screw terminal, 8-pin	3x, M20 x 1.5	1 x top, 4 x lateral (90 °)	Magnet	Electromagnetic
63000602	L100-P4C3-M20-SLM24	1NC, 2NC, slow-action contact	Plastic	Terminal, screw terminal, 8-pin	3x, M20 x 1.5	1 x top, 4 x lateral (90 °)	Spring	Spring force

Note: Actuators must be ordered separately!

Dimensioned drawings: L100

L100-P3C3-M20-SLM24 /
L100-P4C3-M20-SLM24 safety locking device



L100-P3C3-M20-MLM24 safety locking device

ACCESSORIES: L100**Connection technology**

Connection cables

Part no.	Part description	Connection 1	No. of pins	Cable length	Sheathing material
678060	CB-M12-5000E-8GF	Connector, M12, axial, female	8-pin	5,000 mm	PUR
678061	CB-M12-10000E-8GF	Connector, M12, axial, female	8-pin	10,000 mm	PUR
678062	CB-M12-15000E-8GF	Connector, M12, axial, female	8-pin	15,000 mm	PUR
678063	CB-M12-25000E-8GF	Connector, M12, axial, female	8-pin	25,000 mm	PUR

Further connection cables can be found on our website

User-configurable connectors

Part no.	Part description	Connection	No. of pins
63000844	AC-PLP-8	Connector, M12, axial, male	8-pin

Adapter

Part no.	Part description	Design
63000843	AC-A-M20-12NPT	M20 x 1,5 on 1/2 NPT

Actuator

Part no.	Part description	Design	Mounting bore holes	Material	Type of fastening	Description
63000721	AC-AH-A	Angled	In key direction	Stainless steel	Through-hole mounting	
63000724	AC-AH-F1J2	Straight	In key direction	Plastic, stainless steel	Through-hole mounting	Functions: flexible, 1 direction, adjustable, 2 directions
63000723	AC-AH-F2J2	Straight	90° to key direction	Plastic, stainless steel	Through-hole mounting	Functions: flexible, 2 directions, adjustable, 2 directions
63000722	AC-AH-F4	Straight	90° to key direction	Plastic, stainless steel	Through-hole mounting	Functions: flexible, 4 directions
63000725	AC-AH-F4J2-TK	Straight	In key direction, 90° to key direction	Stainless steel	Through-hole mounting	Functions: flexible, 4 directions, rotatable head, key, adjustable, 4 directions
63000720	AC-AH-S	Straight	90° to key direction	Stainless steel	Through-hole mounting	
63000846	AC-KL-AH			Metal		Actuator interlock

/// L200



The L200 safety locking device designed for highly demanding applications is predestined for guarding large protective doors and sliding gates, in logistics operations, for example, or with very big machinery, and under harsh conditions.



Benefits:

- Heavy duty access guarding on big machinery and systems in harsh ambient conditions
- Emergency unlock function (ergonomically optimized panic button) for manually opening the protective devices in the event of an emergency
- Suitable for extreme mechanical loads
- Auxiliary unlocking (for spring locking)
- LED status indicators

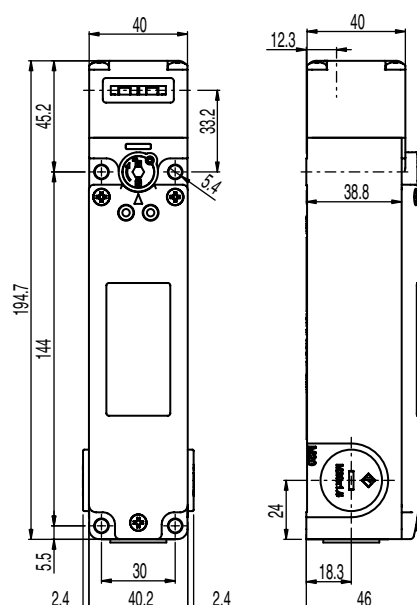


Direct access to the online product selector at www.leuze.com/en/I200

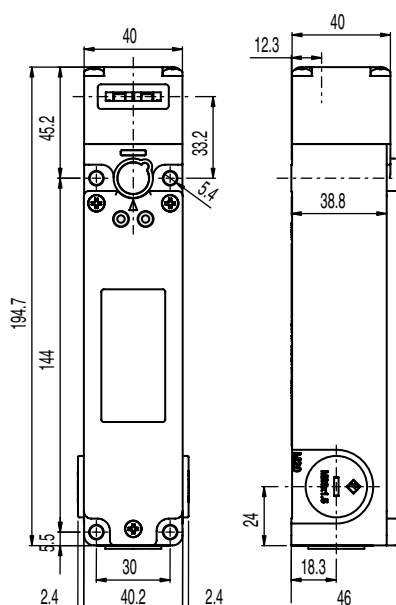
Part no.	Part description	Contact allocation	Housing material	Connection	Cable entry	Approach actuation directions	Locking actuation	Locking type
63000653	L200-M0C3-SLM24-L2G	1NC + 1NO, 1NC + 1NO, slow-action contact	Metal	Terminal, screw terminal, 10-pin	3x, M20 × 1.5	4 x lateral (90 °), 1 x top	Spring	Spring force
63000650	L200-M1C3-SLM24-L2G	1NC + 1NO, 2NC, slow-action contact	Metal	Terminal, screw terminal, 10-pin	3x, M20 × 1.5	1 x top, 4 x lateral (90 °)	Spring	Spring force
63000652	L200-M1C3-SLM24-PB-L2G	1NC + 1NO, 2NC, slow-action contact	Metal	Terminal, screw terminal, 10-pin	3x, M20 × 1.5	1 x top, 4 x lateral (90 °)	Spring	Spring force
63000651	L200-M1C3-MLM24-L2G	1NC + 1NO, 2NC, slow-action contact	Metal	Terminal, screw terminal, 10-pin	3x, M20 × 1.5	1 x top, 4 x lateral (90 °)	Magnet	Electromagnetic

Note: Actuators must be ordered separately!

Dimensioned drawings: L200



L200-M1C3-SLM24-L2G safety locking device



L200-M1C3-MLM24-L2G safety locking device

Switching sensors

Measuring sensors

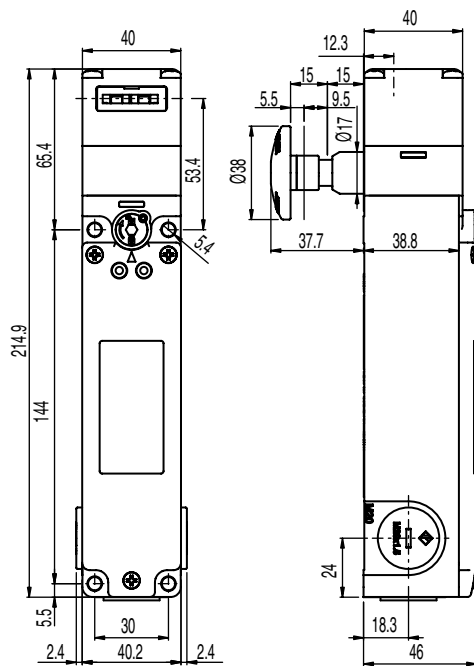
Products for safety at work

Identification

Data transmission / Control components

Industrial image processing

Accessories

Dimensioned drawings: L200

L200-M1C3-SLM24-PB-L2G safety locking device

ACCESSORIES: L200**Connection technology**

Adapter

Part no.	Part description	Design
63000843	AC-A-M20-12NPT	M20 × 1,5 on 1/2 NPT

Actuator

Part no.	Part description	Design	Mounting bore holes	Material	Type of fastening	Description
63000741	AC-AHL-A	Angled	In key direction	Stainless steel	Through-hole mounting	
63000743	AC-AHL-F4J2-TK	Straight	90° to key direction	Stainless steel	Through-hole mounting	Functions: flexible, 4 directions, rotatable head, key, adjustable, 4 directions
63000742	AC-AHL-RM	Straight	90° to key direction	Stainless steel	Through-hole mounting	Functions: rubber-mounted fastening
63000740	AC-AHL-S	Straight	90° to key direction	Stainless steel	Through-hole mounting	
63000847	AC-KL-AHL			Metal		Actuator interlock

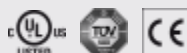
Mounting

Part no.	Part description	Description	Dimension
63000749	AC-Exit-PB	Stick-on label; labeled: "PUSH TO EXIT"	300 mm
63000750	AC-PB15-L200	Extension	17 mm × 15 mm
63000751	AC-PB30-L200	Extension	17 mm × 30 mm
63000752	AC-PB40-L200	Extension	17 mm × 40 mm
63000753	AC-PB60-L200	Extension	17 mm × 60 mm
63000754	AC-PB500-L200	Extension; length: 60 mm ... 500 mm	

/// L300



The robust L300 safety locking devices for safety applications up to SIL 3 / PL e are used to guard large safety doors or sliding gates as well as very large machines that have stopping times. The actuator is detected electronically by means of RFID technology. Through millions of different encodings, the actuators achieve a high encoding level acc. to EN ISO 14119 and thereby reliably prevent possible attempts at tampering. The L300 series is designed for use under rough environmental conditions.

**Benefits:**

- RFID actuator for maximum protection against tampering
- Robust design with 7,500 N locking force and degree of protection IP 67 / IP 69K for use under rough environmental conditions and under extreme stress
- 5-LED display for simple status overview
- Emergency unlock function (ergonomically optimized panic button) for manually opening the protective devices in the event of an emergency



Direct access to the online product selector at www.leuze.com/en/I300

Part no.	Part description	Contact allocation	Housing material	Connection	Cable entry	Encoding level	Teach input for actuator	Release device
50132040	L300-M41C3-SLM24-UCA	OSSDs	Metal	Terminal, spring-cage terminal, 16-pin	3x, M20 × 1.5	High	Yes	
50132048	L300-M41C3-SLM24-KYPB-UCA	OSSDs	Metal	Terminal, spring-cage terminal, 16-pin	3x, M20 × 1.5	High	Yes	Auxiliary release with lock, escape release button
50132057	L300-M41C3-SLM24-PB-UCA	OSSDs	Metal	Terminal, spring-cage terminal, 16-pin	3x, M20 × 1.5	High	Yes	Escape release button
50132041	L300-M41M12B8-SLM24-UCA	OSSDs	Metal	Connector, M12, 8-pin, metal	From below	High	Yes	
50132043	L300-M41M12L8-SLM24-UCA	OSSDs	Metal	Connector, M12, 8-pin, metal	On left side	High	Yes	
50132042	L300-M41M12R8-SLM24-UCA	OSSDs	Metal	Connector, M12, 8-pin, metal	On right side	High	Yes	
50132049	L300-M41M12B8-SLM24-KYPB-UCA	OSSDs	Metal	Connector, M12, 8-pin, metal	From below	High	Yes	Auxiliary release with lock, escape release button
50132058	L300-M41M12B8-SLM24-PB-UCA	OSSDs	Metal	Connector, M12, 8-pin, metal	From below	High	Yes	Escape release button
50132051	L300-M41M12L8-SLM24-KYPB-UCA	OSSDs	Metal	Connector, M12, 8-pin, metal	On left side	High	Yes	Auxiliary release with lock, escape release button
50132060	L300-M41M12L8-SLM24-PB-UCA	OSSDs	Metal	Connector, M12, 8-pin, metal	On left side	High	Yes	Escape release button
50132050	L300-M41M12R8-SLM24-KYPB-UCA	OSSDs	Metal	Connector, M12, 8-pin, metal	On right side	High	Yes	Auxiliary release with lock, escape release button
50132059	L300-M41M12R8-SLM24-PB-UCA	OSSDs	Metal	Connector, M12, 8-pin, metal	On right side	High	Yes	Escape release button
50132201	L300-M31C3-SLM24-UCA	OSSDs	Metal	Terminal, spring-cage terminal, 16-pin	3x, M20 × 1.5	High	No	
50132210	L300-M31C3-SLM24-KYPB-UCA	OSSDs	Metal	Terminal, spring-cage terminal, 16-pin	3x, M20 × 1.5	High	No	Auxiliary release with lock, escape release button
50132216	L300-M31C3-SLM24-PB-UCA	OSSDs	Metal	Terminal, spring-cage terminal, 16-pin	3x, M20 × 1.5	High	No	Escape release button
50132202	L300-M31M12B8-SLM24-UCA	OSSDs	Metal	Connector, M12, 8-pin, metal	From below	High	No	
50132204	L300-M31M12L8-SLM24-UCA	OSSDs	Metal	Connector, M12, 8-pin, metal	On left side	High	No	
50132203	L300-M31M12R8-SLM24-UCA	OSSDs	Metal	Connector, M12, 8-pin, metal	On right side	High	No	
50132213	L300-M31M12B8-SLM24-KYPB-UCA	OSSDs	Metal	Connector, M12, 8-pin, metal	From below	High	No	Auxiliary release with lock, escape release button
50132217	L300-M31M12B8-SLM24-PB-UCA	OSSDs	Metal	Connector, M12, 8-pin, metal	From below	High	No	Escape release button
50132215	L300-M31M12L8-SLM24-KYPB-UCA	OSSDs	Metal	Connector, M12, 8-pin, metal	On left side	High	No	Auxiliary release with lock, escape release button
50132219	L300-M31M12L8-SLM24-PB-UCA	OSSDs	Metal	Connector, M12, 8-pin, metal	On left side	High	No	Escape release button
50132214	L300-M31M12R8-SLM24-KYPB-UCA	OSSDs	Metal	Connector, M12, 8-pin, metal	On right side	High	No	Auxiliary release with lock, escape release button
50132218	L300-M31M12R8-SLM24-PB-UCA	OSSDs	Metal	Connector, M12, 8-pin, metal	On right side	High	No	Escape release button
50132036	L300-M31C3-SLM24-SCA	OSSDs	Metal	Terminal, spring-cage terminal, 16-pin	3x, M20 × 1.5	Low	No	
50132044	L300-M31C3-SLM24-KYPB-SCA	OSSDs	Metal	Terminal, spring-cage terminal, 16-pin	3x, M20 × 1.5	Low	No	Auxiliary release with lock, escape release button
50132052	L300-M31C3-SLM24-PB-SCA	OSSDs	Metal	Terminal, spring-cage terminal, 16-pin	3x, M20 × 1.5	Low	No	Escape release button
50132037	L300-M31M12B8-SLM24-SCA	OSSDs	Metal	Connector, M12, 8-pin, metal	From below	Low	No	
50132039	L300-M31M12L8-SLM24-SCA	OSSDs	Metal	Connector, M12, 8-pin, metal	On left side	Low	No	

Note: Actuators are included in delivery!

Switching
sensorsMeasuring
sensorsProducts for
safety at work

Identification

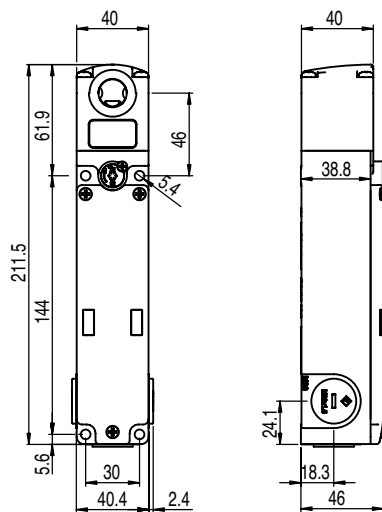
Data transmission /
Control componentsIndustrial image
processing

Accessories

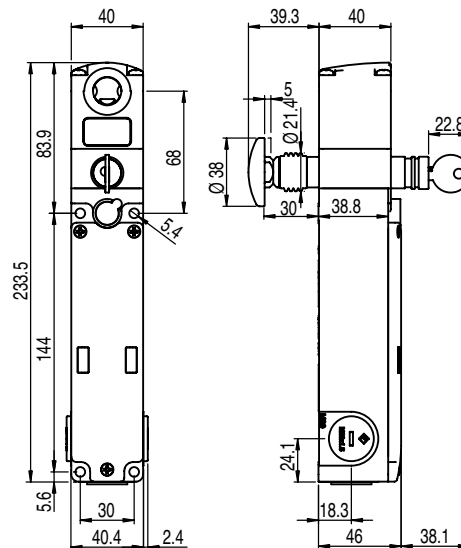
Part no.	Part description	Contact allocation	Housing material	Connection	Cable entry	Encoding level	Teach input for actuator	Release device
50132038	L300-M31M12R8-SLM24-SCA	OSSDs	Metal	Connector, M12, 8-pin, metal	On right side	Low	No	
50132045	L300-M31M12B8-SLM24-KYPB-SCA	OSSDs	Metal	Connector, M12, 8-pin, metal	From below	Low	No	Auxiliary release with lock, escape release button
50132053	L300-M31M12B8-SLM24-PB-SCA	OSSDs	Metal	Connector, M12, 8-pin, metal	From below	Low	No	Escape release button
50132047	L300-M31M12L8-SLM24-KYPB-SCA	OSSDs	Metal	Connector, M12, 8-pin, metal	On left side	Low	No	Auxiliary release with lock, escape release button
50132056	L300-M31M12L8-SLM24-PB-SCA	OSSDs	Metal	Connector, M12, 8-pin, metal	On left side	Low	No	Escape release button
50132046	L300-M31M12R8-SLM24-KYPB-SCA	OSSDs	Metal	Connector, M12, 8-pin, metal	On right side	Low	No	Auxiliary release with lock, escape release button
50132054	L300-M31M12R8-SLM24-PB-SCA	OSSDs	Metal	Connector, M12, 8-pin, metal	On right side	Low	No	Escape release button

Note: Actuators are included in delivery!

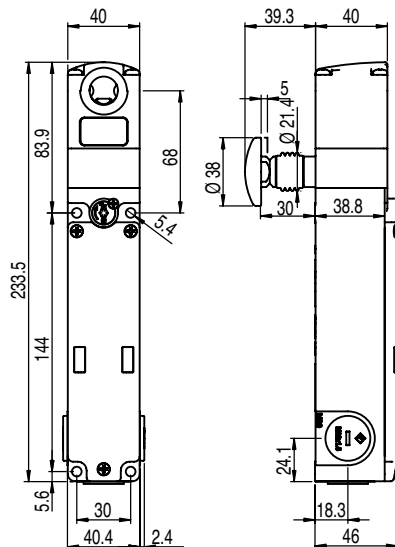
Dimensioned drawings: L300



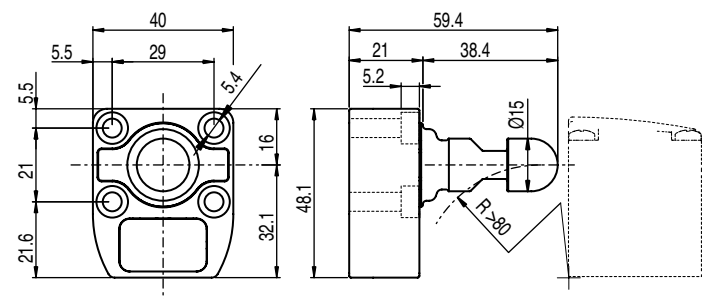
L300-MxxC3-xxxxx safety locking device



L300-MxxC3-xxxxx-KYPB safety locking device



L300-MxxC3-xxxxx-PB safety locking device



AC-L300-xCA actuator

ACCESSORIES: L300

Connection technology

Connection cables

Part no.	Part description	Connection 1	No. of pins	Cable length	Sheathing material
678060	CB-M12-5000E-8GF	Connector, M12, axial, female	8-pin	5,000 mm	PUR
678061	CB-M12-10000E-8GF	Connector, M12, axial, female	8-pin	10,000 mm	PUR
678062	CB-M12-15000E-8GF	Connector, M12, axial, female	8-pin	15,000 mm	PUR
678063	CB-M12-25000E-8GF	Connector, M12, axial, female	8-pin	25,000 mm	PUR

Further connection cables can be found on our website

Actuator

Part no.	Part description	Type of fastening	Code type	Encoding level
50132061	AC-L300-SCA	Through-hole mounting	Standard code	Low
50132062	AC-L300-UCA	Through-hole mounting	Unique code	High

Mounting

Part no.	Part description	Description	Dimension
50132063	AC-L300-PB30	Extension	13 mm × 30 mm
50132064	AC-L300-PB40	Extension	13 mm × 40 mm
50132065	AC-L300-PB50	Extension	13 mm × 50 mm
50132066	AC-L300-PB60	Extension	13 mm × 60 mm

SMARTER APPLICATION KNOW-HOW

**Our many years of experience –
Your extensive knowledge about
safety at work**

- Safety seminars
- Standards workshops
- Product training courses

*"In our seminars you will
acquire compact knowledge
about safety at work.
A day that is well worth your while!"*

Markus Erdorf,
Safety Consultant and Trainer



Select the seminar you need and register directly at www.leuze.com/en/seminars



Switching
sensors

Measuring
sensors

Products for
safety at work

Identification

Data transmission /
Control components

Industrial image
processing

Accessories

//SAFETY COMMAND DEVICES

AND OFF!

For stopping in emergencies, EN ISO 12100-1 stipulates protective devices and supplementary measures such as E-Stop buttons or emergency rope switches. Leuze electronic offers solutions that are optimized with respect to safety and ergonomics.

/// ERS200



The ERS200 E-Stop rope switch is a safety command device in accordance with EN ISO 13850 and EN 60947-5-5 and is used with preference with expansive points of operation. The rope-pull activation guarantees that it is easy to reach all along the point of operation.



Benefits:

- Pulling the rope or rope fracture safely stops the machine
- Clicks in on both sides with friction-locking contacts
- Easy alignment with switching point indicator
- Easy integration with 3 cable approach directions
- Compact metal housing, degree of protection IP 67
- Reset button with status display
- Temperature compensation for longer rope lengths

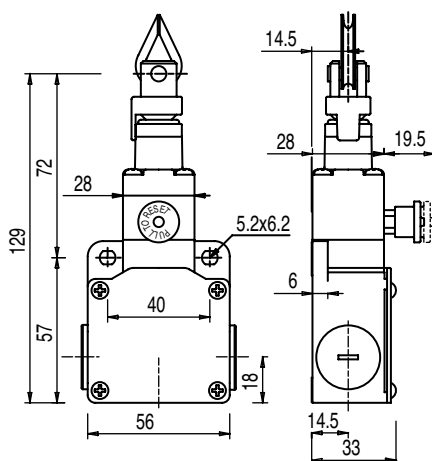


Direct access to the online product selector at www.leuze.com/en/ers200

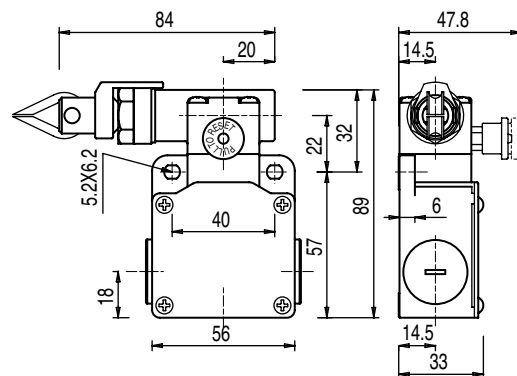
Part no.	Part description	Contact allocation	Housing material	Connection	Cable entry	Actuation directions	Actuation force (pull-out)	Actuating path with forced separation	Rope length, max.
63000500	ERS200-M0C3-M20-HLR	1NC + 1NO	Metal	Terminal, 4-pin	3x, M20 × 1.5	On longitudinal axis	83 N	8 mm	24 m
63000524	ERS200-M0C3-M20-HAL	1NC + 1NO	Metal	Terminal, 4-pin	3x, M20 × 1.5	To left	235 N	14 mm	70 m
63000522	ERS200-M0C3-M20-HAR	1NC + 1NO	Metal	Terminal, 4-pin	3x, M20 × 1.5	To right	235 N	14 mm	70 m
63000501	ERS200-M1C3-M20-HLR	2NC	Metal	Terminal, 4-pin	3x, M20 × 1.5	On longitudinal axis	83 N	8 mm	24 m
63000525	ERS200-M1C1-M20-HAL	2NC	Metal	Terminal, 4-pin	1x, M20 × 1.5	To left	235 N	14 mm	70 m
63000523	ERS200-M1C1-M20-HAR	2NC	Metal	Terminal, 4-pin	1x, M20 × 1.5	To right	235 N	14 mm	70 m
63000502	ERS200-M4C3-M20-HLR	2NC + 1NO	Metal	Terminal, 6-pin	3x, M20 × 1.5	On longitudinal axis	83 N	8 mm	24 m
63000503	ERS200-M4C1-M20-HLR	2NC + 1NO	Metal	Connector, 6-pin	1x, M20 × 1.5	On longitudinal axis	83 N	8 mm	24 m
63000504	ERS200-M4C1-M12-HLR	2NC + 1NO	Metal	Connector, 8-pin	1x, M20 × 1.5	On longitudinal axis	83 N	8 mm	24 m
63000521	ERS200-M4C3-M20-HAL	2NC + 1NO	Metal	Terminal, 6-pin	3x, M20 × 1.5	To left	235 N	14 mm	70 m
63000520	ERS200-M4C3-M20-HAR	2NC + 1NO	Metal	Terminal, 6-pin	3x, M20 × 1.5	To right	235 N	14 mm	70 m

Note: Steel rope, rope clamps and other accessories must be ordered separately

Dimensioned drawings: ERS200

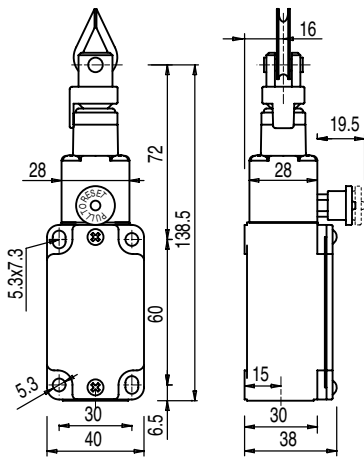


ERS-MxC3x-HLR safety command device

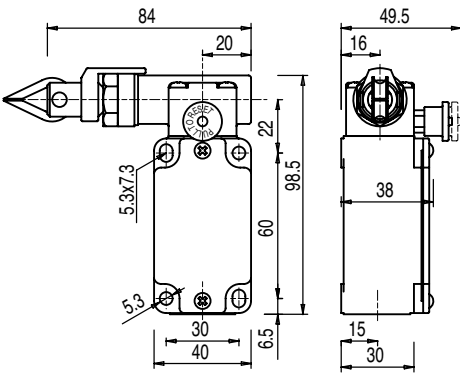


Safety command device ERS200-MxC3x-HAR
(ERS200-MxC3x-HAL mirror-image)

Dimensioned drawings: ERS200



ERS200-MxC1x-HLR safety command device



Safety command device ERS200-MxC1x-HAR
(ERS200-MxC1x-HAL mirror-image)

ACCESSORIES: ERS200

Mounting

Part no.	Part description	Description	Consisting of	Diameter	Rope length	Material	Functions	Label
63000800	AC-P-ERS	Corner pulley, straight mounting		35 mm		Stainless steel, plastic		
63000793	AC-AP-ERS	Corner pulley, angled mounting		35 mm		Plastic, stainless steel		
63000797	AC-SB0-ERS	Stud bolts		16 mm		Steel, galvanized, plastic	Adjustable with lock nut, rope quick fastener, red protective cap	
63000798	AC-ENCLF-ERS	End ring		16 mm		Steel, galvanized, plastic	Rope quick fastener, red protective cap	
63000799	AC-SA-ERS	Safety spiral spring, suitable for safety command device ERS200-...-HAR, safety command device ERS200-...-HAL				Stainless steel		
63000792	AC-SL-ERS	Safety spiral spring, suitable for safety command device ERS200-...-HLR				Stainless steel		
63000795	AC-STRO-35-ERS	Steel rope		5 mm	35 m	Steel, zinc, plated, red plastic coated		
63000796	AC-STRO-100-ERS	Steel rope		5 mm	100 m	Steel, zinc, plated, red plastic coated		
63000794	AC-STOP-ERS	Cable labeling		25 mm		Plastic		"Stop" with reference no.:5638 IEC 60417
63000790	AC-KT10-ERS	Accessories set	Rope clamps, 10 m steel rope					
63000791	AC-KT20-ERS	Accessories set	Rope clamps, 20 m steel rope					

/// ESB200

E-Stop buttons of the ESB200 series are used at points of operation where it makes sense to be able to enter a stop command at a specific location. The diversity of the series allows the devices to be installed, for example, on profiles as well as in control panels, etc.

**Benefits:**

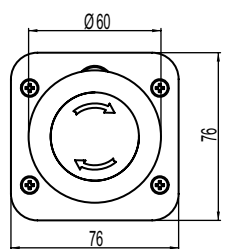
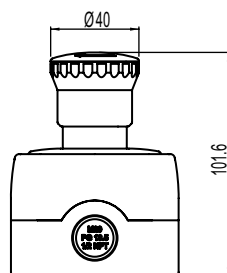
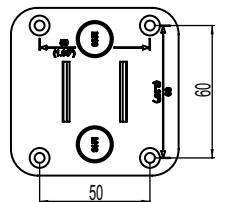
- Contact sets for integration up to cat. 4 in accordance with EN ISO 13849
- 2 safety circuits, 1 signal circuit
- Either screw terminals or M12 connection
- Ergonomically optimized
- Degree of protection IP 67 and IP 69K



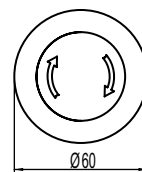
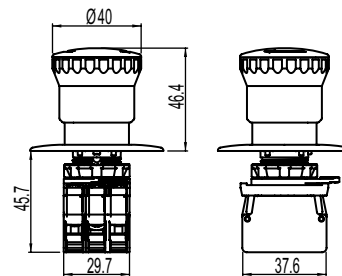
Direct access to the online product selector at www.leuze.com/en/esb200

Part no.	Part description	Contact allocation	Housing material	Connection	Cable entry	Button actuation force	Release device
63000000	ESB200-4TR-C	2NC + 1NO	Plastic	Terminal, 6-pin	5x, M16 × 1.5	25 N	
63000002	ESB200-4KR-C	2NC + 1NO	Plastic	Terminal, 6-pin	5x, M16 × 1.5	25 N	Key
63000004	ESB200-4TR-M12p	2NC + 1NO	Plastic	Connector, 8-pin	M12	25 N	
63000006	ESB200-4KR-M12p	2NC + 1NO	Plastic	Connector, 8-pin	M12	25 N	Key

Included in delivery: mounting screws, 1 "STOP" ring, 2 keys (depending on variant)

Dimensioned drawings: ESB200

ESB200-4TR-M12p / ESB200-4KR-M12p E-Stop buttons



ESB200-4TR-C / ESB200-4KR-C E-Stop buttons

//MAGNETICALLY CODED SENSORS

ACTIVE WITHOUT CONTACT

The magnetically coded safety system is predestined for use under critical environmental conditions, i.e. wherever stress due to dust and humidity is high. Easy start-up, compact housing and extremely low costs characterize this robust series.

/// MC3



The MC3x magnetically coded sensor contains specially combined reed contacts that are contactlessly activated by the coded magnetic field of the actuator. With their cast housing, the extremely tamper proof switches are suitable for demanding applications in dusty or humid environments.



Benefits:

- Monitoring of moving guards on machines with sufficiently short stopping times for demanding applications
- For dusty or humid environments
- High-strength plastic housing
- Highly tamper proof
- Designs for many different types of applications
- PVC or PUR cable, M8 plug



Direct access to the online product selector at www.leuze.com/en/mc3

Part no.	Part description	Contact allocation	Connection	Sao, max.	Off, min.	Sar, min.	Dimensions
63001030	MC388-S2C2-AL	2NO + 1NO (signaling)	Cable with wire-end sleeves, 6-wire, 2,000 mm, PVC	9 mm	19 mm	22 mm	25 mm × 13 mm × 88 mm
63001020	MC388-S2C2-A	2NO	Cable with wire-end sleeves, 4-wire, 2,000 mm, PVC	9 mm	19 mm	22 mm	25 mm × 13 mm × 88 mm
63001021	MC388-S2C5-A	2NO	Cable with wire-end sleeves, 4-wire, 5,000 mm, PVC	9 mm	19 mm	22 mm	25 mm × 13 mm × 88 mm
63001025	MC388-S2R10-A	2NO	Cable with wire-end sleeves, 4-wire, 10,000 mm, PUR	9 mm	19 mm	22 mm	25 mm × 13 mm × 88 mm
63001027	MC388-S2-C02M12-A	2NO	Cable with connector, M12, 4-pin, metal, 200 mm, PVC	9 mm	19 mm	22 mm	25 mm × 13 mm × 88 mm
63001026	MC388-S2M8-A	2NO	Connector, M8, 4-pin, metal	9 mm	19 mm	22 mm	25 mm × 13 mm × 88 mm
63001003	MC388-S1R2-A	1NC + 1NO	Cable with wire-end sleeves, 4-wire, 2,000 mm, PUR	6 mm	13 mm	30 mm	25 mm × 13 mm × 88 mm
63001000	MC388-S1C2-A	1NC + 1NO	Cable with wire-end sleeves, 4-wire, 2,000 mm, PVC	6 mm	13 mm	30 mm	25 mm × 13 mm × 88 mm
63001004	MC388-S1R5-A	1NC + 1NO	Cable with wire-end sleeves, 4-wire, 5,000 mm, PUR	6 mm	13 mm	30 mm	25 mm × 13 mm × 88 mm
63001001	MC388-S1C5-A	1NC + 1NO	Cable with wire-end sleeves, 4-wire, 5,000 mm, PVC	6 mm	13 mm	30 mm	25 mm × 13 mm × 88 mm
63001005	MC388-S1R10-A	1NC + 1NO	Cable with wire-end sleeves, 4-wire, 10,000 mm, PUR	6 mm	13 mm	30 mm	25 mm × 13 mm × 88 mm
63001002	MC388-S1C10-A	1NC + 1NO	Cable with wire-end sleeves, 4-wire, 10,000 mm, PVC	6 mm	13 mm	30 mm	25 mm × 13 mm × 88 mm
63001007	MC388-S1-C02M12-A	1NC + 1NO	Cable with connector, M12, 4-pin, metal, 200 mm, PVC	6 mm	13 mm	30 mm	25 mm × 13 mm × 88 mm
63001006	MC388-S1M8-A	1NC + 1NO	Connector, M8, 4-pin, metal	6 mm	13 mm	30 mm	25 mm × 13 mm × 88 mm
63001070	MC336-S2C2-A	2NO	Cable with wire-end sleeves, 4-wire, 2,000 mm, PVC	7 mm	17 mm	20 mm	26.2 mm × 13 mm × 36 mm
63001071	MC336-S2C5-A	2NO	Cable with wire-end sleeves, 4-wire, 5,000 mm, PVC	7 mm	17 mm	20 mm	26.2 mm × 13 mm × 36 mm
63001077	MC336-S2-C02M12-A	2NO	Cable with connector, M12, 4-pin, metal, 200 mm, PVC	7 mm	17 mm	20 mm	26.2 mm × 13 mm × 36 mm
63001076	MC336-S2M8-A	2NO	Connector, M8, 4-pin, metal	7 mm	17 mm	20 mm	26.2 mm × 13 mm × 36 mm
63001053	MC336-S1R2-A	1NC + 1NO	Cable with wire-end sleeves, 4-wire, 2,000 mm, PUR	3 mm	8 mm	11 mm	26.2 mm × 13 mm × 36 mm
63001050	MC336-S1C2-A	1NC + 1NO	Cable with wire-end sleeves, 4-wire, 2,000 mm, PVC	3 mm	8 mm	11 mm	26.2 mm × 13 mm × 36 mm
63001054	MC336-S1R5-A	1NC + 1NO	Cable with wire-end sleeves, 4-wire, 5,000 mm, PUR	3 mm	8 mm	11 mm	26.2 mm × 13 mm × 36 mm
63001051	MC336-S1C5-A	1NC + 1NO	Cable with wire-end sleeves, 4-wire, 5,000 mm, PVC	3 mm	8 mm	11 mm	26.2 mm × 13 mm × 36 mm
63001055	MC336-S1R10-A	1NC + 1NO	Cable with wire-end sleeves, 4-wire, 10,000 mm, PUR	3 mm	8 mm	11 mm	26.2 mm × 13 mm × 36 mm
63001052	MC336-S1C10-A	1NC + 1NO	Cable with wire-end sleeves, 4-wire, 10,000 mm, PVC	3 mm	8 mm	11 mm	26.2 mm × 13 mm × 36 mm
63001057	MC336-S1-C02M12-A	1NC + 1NO	Cable with connector, M12, 4-pin, metal, 200 mm, PVC	3 mm	8 mm	11 mm	26.2 mm × 13 mm × 36 mm
63001056	MC336-S1M8-A	1NC + 1NO	Connector, M8, 4-pin, metal	3 mm	8 mm	11 mm	26.2 mm × 13 mm × 36 mm
63001120	MC330-S2C2-A	2NO	Cable with wire-end sleeves, 4-wire, 2,000 mm, PVC	6 mm	15 mm	18 mm	M30 × 36 mm
63001121	MC330-S2C5-A	2NO	Cable with wire-end sleeves, 4-wire, 5,000 mm, PVC	6 mm	15 mm	18 mm	M30 × 36 mm
63001127	MC330-S2-C02M12-A	2NO	Cable with connector, M12, 4-pin, metal, 200 mm, PVC	6 mm	15 mm	18 mm	M30 × 36 mm
63001126	MC330-S2M8-A	2NO	Connector, M8, 4-pin, metal	6 mm	15 mm	18 mm	M30 × 36 mm
63001103	MC330-S1R2-A	1NC + 1NO	Cable with wire-end sleeves, 4-wire, 2,000 mm, PUR	6 mm	12 mm	14 mm	M30 × 36 mm
63001100	MC330-S1C2-A	1NC + 1NO	Cable with wire-end sleeves, 4-wire, 2,000 mm, PVC	6 mm	12 mm	14 mm	M30 × 36 mm
63001104	MC330-S1R5-A	1NC + 1NO	Cable with wire-end sleeves, 4-wire, 5,000 mm, PUR	6 mm	12 mm	14 mm	M30 × 36 mm
63001101	MC330-S1C5-A	1NC + 1NO	Cable with wire-end sleeves, 4-wire, 5,000 mm, PVC	6 mm	12 mm	14 mm	M30 × 36 mm
63001105	MC330-S1R10-A	1NC + 1NO	Cable with wire-end sleeves, 4-wire, 10,000 mm, PUR	6 mm	12 mm	14 mm	M30 × 36 mm
63001102	MC330-S1C10-A	1NC + 1NO	Cable with wire-end sleeves, 4-wire, 10,000 mm, PVC	6 mm	12 mm	14 mm	M30 × 36 mm
63001107	MC330-S1-C02M12-A	1NC + 1NO	Cable with connector, M12, 4-pin, metal, 200 mm, PVC	6 mm	12 mm	14 mm	M30 × 36 mm
63001106	MC330-S1M8-A	1NC + 1NO	Connector, M8, 4-pin, metal	6 mm	12 mm	14 mm	M30 × 36 mm

Included in delivery: 1 actuator, mounting material

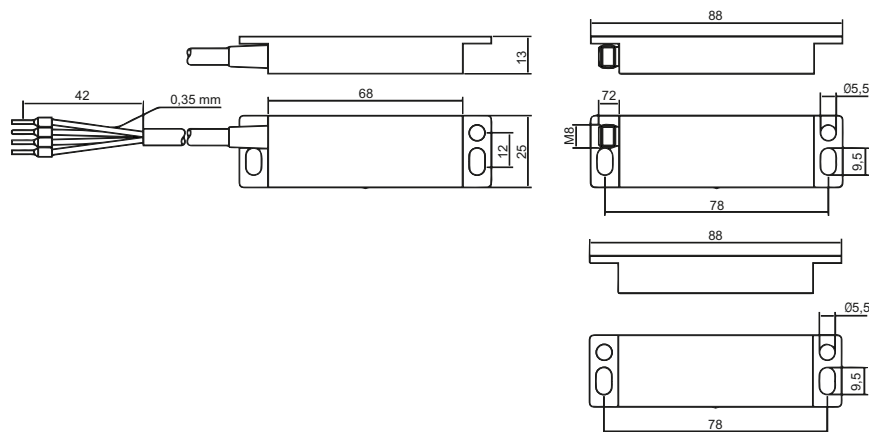
Notice: An MSI-MC3x safety relay is required for certified application! This must be ordered separately.

Switching
sensorsMeasuring
sensorsProducts for
safety at work

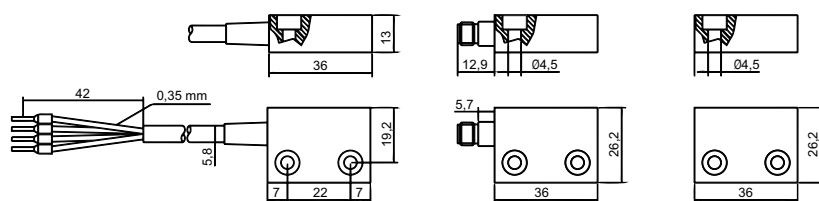
Identification

Data transmission /
Control componentsIndustrial image
processing

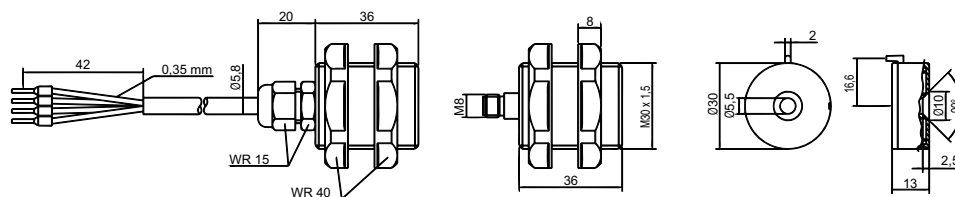
Accessories

Dimensioned drawings: MC3

MC388x magnetically coded sensor with actuator



MC336x magnetically coded sensor with actuator



MC330x magnetically coded sensor with actuator

ACCESSORIES: MC3**Connection technology**

Connection cables

Part no.	Part description	Connection 1	No. of pins	Cable length	Sheathing material
50130854	KD U-M8-4A-P1-020	Connector, M8, axial, female	4-pin	2,000 mm	PUR
50130856	KD U-M8-4A-P1-050	Connector, M8, axial, female	4-pin	5,000 mm	PUR
50130857	KD U-M8-4A-P1-100	Connector, M8, axial, female	4-pin	10,000 mm	PUR

Further connection cables can be found on our website

Actuator

Part no.	Part description	Dimensions	Housing design
63001152	MC330-S1-A	30 mm × 13 mm	Cylindrical
63001157	MC330-S2-A	30 mm × 13 mm	Cylindrical
63001151	MC336-S1-A	26 mm × 13 mm × 36 mm	Cubic
63001156	MC336-S2-A	26 mm × 13 mm × 36 mm	Cubic
63001150	MC388-S1-A	25 mm × 13 mm × 88 mm	Cubic
63001155	MC388-S2-A	25 mm × 13 mm × 88 mm	Cubic

Mounting

Part no.	Part description	Description	Suitable for	Dimensions
63001154	MC336-SP-8	Spacer	MC336 housing	26 mm × 8 mm × 36 mm
63001153	MC388-SP-8	Spacer	MC388 housing	25 mm × 8 mm × 88 mm

//SAFETY TRANSPONDERS

PURE FLEXIBILITY!

Safety transponders are well-suited for applications in which a very high level of safety and the highest protection against manipulation are necessary. Their high-strength plastic housings offer reliable protection against contamination and humidity in rough environmental conditions.

/// RD800



No matter if you require the RD800-S for single connections or the RD800-M for multiple applications – depending on the degree of risk, you can select ready-configured systems with standard or unique code detection (S- or U-variants). Teachable P-variants are a good choice if, for example, increased flexibility on-site is necessary.



Benefits:

- Standard code, unique code or flexibly programmable code
- M12 connection on the left or right for the most possible freedom during assembly
- Three-sided actuator mounting for quick and easy attachment
- 4 multicolored LEDs for detailed diagnostics and effective installation and testing routines
- Degree of protection IP 67 and IP 69K with smooth, stable plastic housing for easy cleaning
- Permanent laser print for the long-term readability of product data



Direct access to the online product selector at www.leuze.com/en/rd800

Part no.	Part description	Application	Code type	Connection	Plug outlet	Sao, max.	Sar, min.
63002052	RD800-SSCA-CB2-L	Individual use	Standard code	Cable		10 mm	16 mm
63002050	RD800-SSCA-CB2-R	Individual use	Standard code	Cable		10 mm	16 mm
63002002	RD800-SSCA-M12L	Individual use	Standard code	Connector, M12, 5-pin, metal	On left side	10 mm	16 mm
63002000	RD800-SSCA-M12R	Individual use	Standard code	Connector, M12, 5-pin, metal	On right side	10 mm	16 mm
63002053	RD800-SUCA-CB2-L	Individual use	Unique code	Cable		10 mm	16 mm
63002051	RD800-SUCA-CB2-R	Individual use	Unique code	Cable		10 mm	16 mm
63002003	RD800-SUCA-M12L	Individual use	Unique code	Connector, M12, 5-pin, metal	On left side	10 mm	16 mm
63002001	RD800-SUCA-M12R	Individual use	Unique code	Connector, M12, 5-pin, metal	On right side	10 mm	16 mm
63002062	RD800-MSCA-CB2-L	Individual use, series use	Standard code	Cable		10 mm	16 mm
63002060	RD800-MSCA-CB2-R	Individual use, series use	Standard code	Cable		10 mm	16 mm
63002012	RD800-MSCA-M12L	Individual use, series use	Standard code	Connector, M12, 8-pin, metal	On left side	10 mm	16 mm
63002010	RD800-MSCA-M12R	Individual use, series use	Standard code	Connector, M12, 8-pin, metal	On right side	10 mm	16 mm
63002063	RD800-MUCA-CB2-L	Individual use, series use	Unique code	Cable		10 mm	16 mm
63002061	RD800-MUCA-CB2-R	Individual use, series use	Unique code	Cable		10 mm	16 mm
63002013	RD800-MUCA-M12L	Individual use, series use	Unique code	Connector, M12, 8-pin, metal	On left side	10 mm	16 mm
63002011	RD800-MUCA-M12R	Individual use, series use	Unique code	Connector, M12, 8-pin, metal	On right side	10 mm	16 mm
63002021	RD800-MP-M12L	Individual use, series use	Flexible programming	Connector, M12, 8-pin, metal	On left side	10 mm	16 mm
63002020	RD800-MP-M12R	Individual use, series use	Flexible programming	Connector, M12, 8-pin, metal	On right side	10 mm	16 mm

Included in delivery: 1 actuator, washers (stainless steel), caps

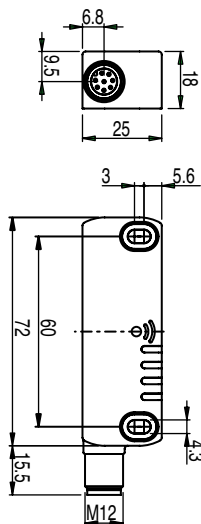
Switching
sensorsMeasuring
sensorsProducts for
safety at work

Identification

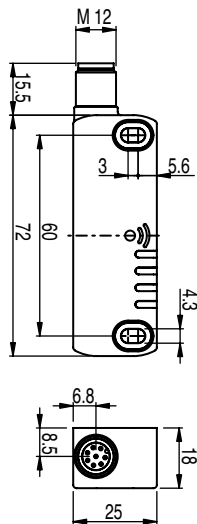
Data transmission /
Control componentsIndustrial image
processing

Accessories

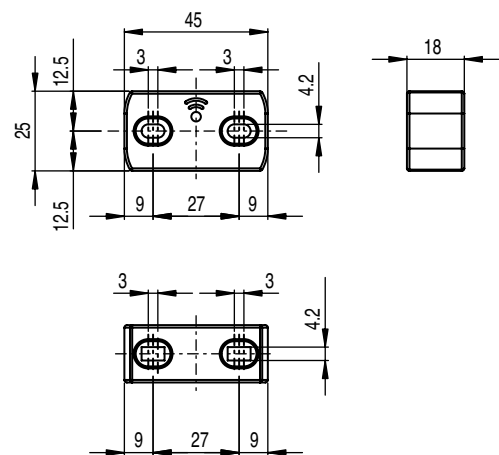
Dimensioned drawings: RD800



RD800-...-M12L
safety transponders



RD800-...-M12R
safety transponders



Actuator for RD800

ACCESSORIES: RD800

Connection technology

Connection cables

Part no.	Part description	Connection 1	No. of pins	Cable length	Sheathing material
678055	CB-M12-5000E-5GF	Connector, M12, axial, female	5-pin	5,000 mm	PUR
678056	CB-M12-10000E-5GF	Connector, M12, axial, female	5-pin	10,000 mm	PUR
678057	CB-M12-15000E-5GF	Connector, M12, axial, female	5-pin	15,000 mm	PUR
678058	CB-M12-25000E-5GF	Connector, M12, axial, female	5-pin	25,000 mm	PUR
678060	CB-M12-5000E-8GF	Connector, M12, axial, female	8-pin	5,000 mm	PUR
678061	CB-M12-10000E-8GF	Connector, M12, axial, female	8-pin	10,000 mm	PUR
678062	CB-M12-15000E-8GF	Connector, M12, axial, female	8-pin	15,000 mm	PUR
678063	CB-M12-25000E-8GF	Connector, M12, axial, female	8-pin	25,000 mm	PUR

Further connection cables can be found on our website

Actuator

Part no.	Part description	Application	Code type
63002100	RD800-x-SCA	Individual use, series use	Standard code
63002101	RD800-x-UCA	Individual use, series use	Unique code

SMARTER CUSTOMER SERVICE



International sales locations –
Everywhere you need us.

Information on our worldwide locations and partners: www.leuze.com/en/worldwide